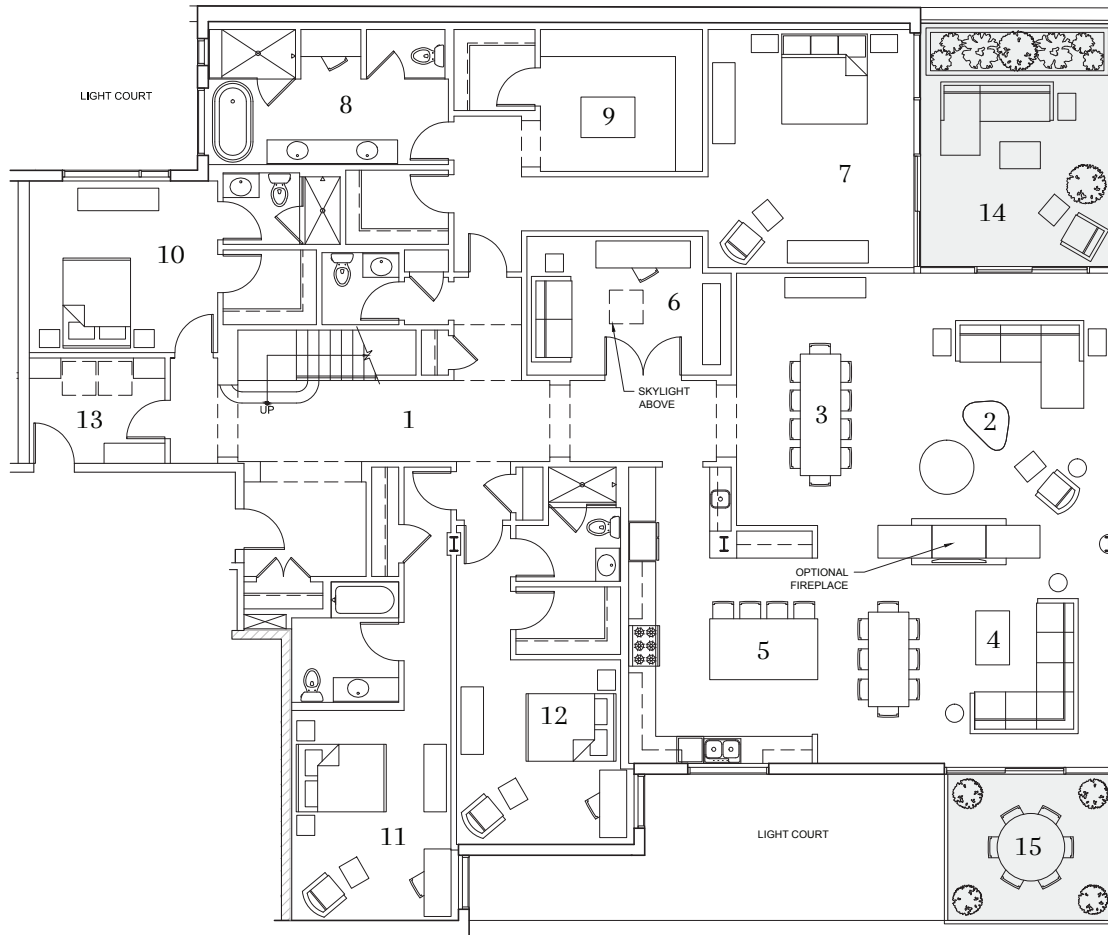


EAST PENTHOUSE INTERIOR PLAN - OPTION A

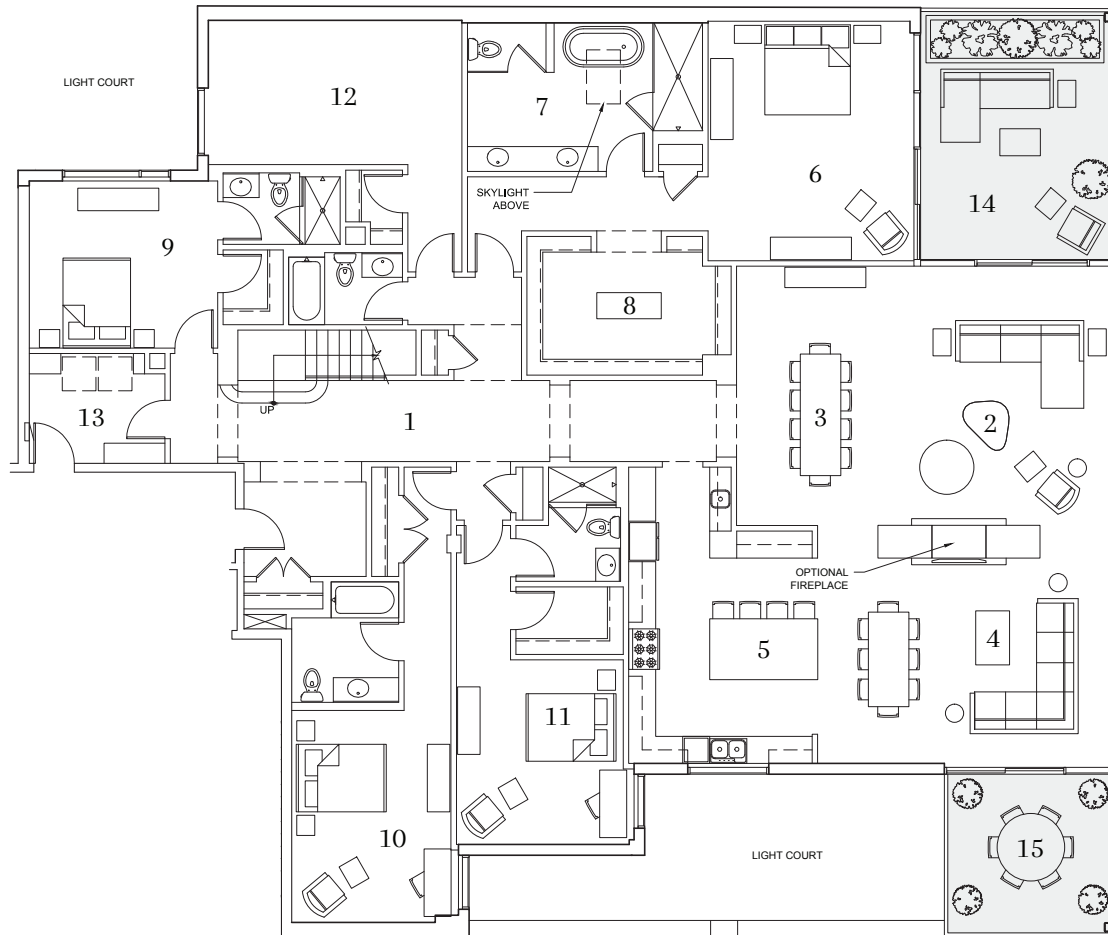
Interior: 4,497sf / Exterior: 1,269sf + 2,043sf Green Space



1	Gallery	37'-0" x 6'-0"	5	Kitchen	13'-7" x 21'-11"	9	Master Dressing	12'-0" x 10'-6"	13	Laundry/Mud Room	10'-0" x 7'-9"
2	Living Room	17'-3" x 18'-8"	6	Library	13'-0" x 10'-3"	10	Second Bedroom	13'-11" x 12'-8"	14	First Terrace	14'-4" x 18'-0"
3	Dining Room	11'-0" x 18'-8"	7	Master Suite	15'-0" x 17'-7"	11	Third Bedroom	12'-4" x 15'-6"	15	Second Terrace	12'-4" x 10'-10"
4	Family Room	22'-4" x 15'-0"	8	Master Bathroom	17'-6" x 10'-0"	12	Fourth Bedroom	12'-2" x 13'-8"			

EAST PENTHOUSE INTERIOR PLAN - OPTION B

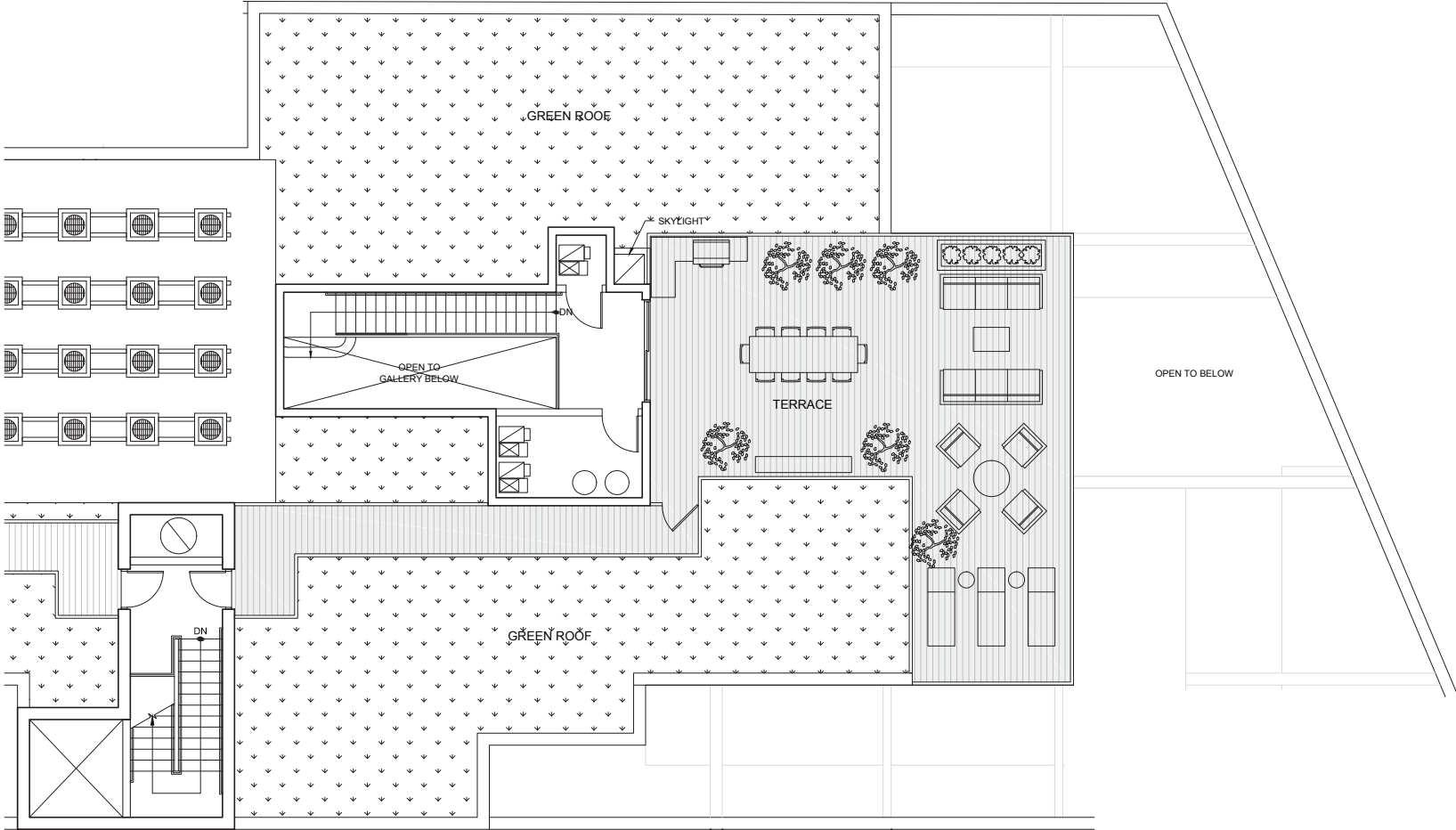
Interior: 4,497sf / Exterior: 1,269sf + 2,043sf Green Space



1	Gallery	37'-0" x 6'-0"	5	Kitchen	13'-7" x 21'-11"	9	Second Bedroom	13'-11" x 12'-4"	13	Laundry/Mud Room	10'-0" x 8'-1"
2	Living Room	17'-3" x 18'-8"	6	Master Suite	15'-0" x 17'-8"	10	Third Bedroom	12'-4" x 15'-6"	14	First Terrace	14'-4" x 18'-0"
3	Dining Room	11'-0" x 18'-8"	7	Master Bathroom	17'-5" x 10'-11"	11	Fourth Bedroom	12'-2" x 13'-8"	15	Second Terrace	12'-4" x 10'-10"
4	Family Room	22'-4" x 15'-0"	8	Master Dressing	15'-0" x 10'-3"	12	Fifth Bedroom/Gym	18'-9" x 10'-8"			

EAST PENTHOUSE ROOFTOP PLAN

Interior: 4,497sf / Exterior: 1,269sf + 2,043sf Green Space



1 Entry

7'-2" x 9'-8"